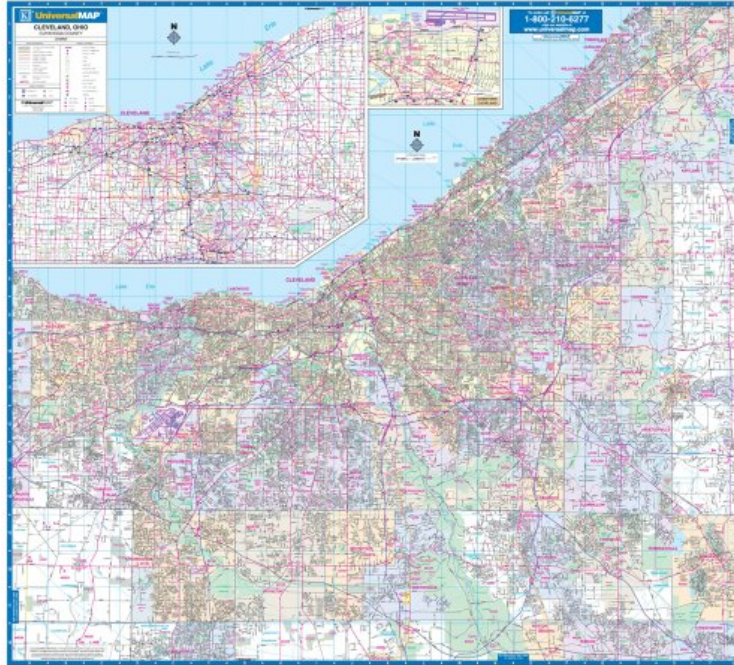


[Online library] Cleveland, Oh (City Wall Maps)

Cleveland, Oh (City Wall Maps)

Kappa Map Group

**Download PDF / ePub / DOC / audiobook / ebooks*



 Download

 Read Online

#19225959 in Books 2001-01-01 Original language: English PDF # 1 Binding: Map 1 pages | File size: 46.Mb

Kappa Map Group : Cleveland, Oh (City Wall Maps) before purchasing it in order to gauge whether or not it would be worth my time, and all praised Cleveland, Oh (City Wall Maps):

Full color commercial wall map, showing complete street detail and boundaries for Cleveland and all of Cuyahoga County, Ohio and adjacent areas with the following boundaries: North: Lake Erie; South: to Route 80, showing the 80/480 interchange, and Richfield; East: State Route 306 including Willoughby; West: to Avon Lake in Lorain County; Map Insets: downtown Cleveland showing Rock and Roll Hall of Fame, Gund Arena and Jacob's Field; northeast Ohio; 7 County area map. Map scale is 1-inch = 3,520 feet (1.5-inches = 1-mile). The map includes: all streets and highways, Zip Codes boundaries, city limits and annexations, government buildings, airports, golf country clubs, water features, post offices, fire and police stations, shopping centers, cemeteries, points of interest, mileage circles, educational institutions, hospitals, recreational parks, railroads. The map is published 54-inches by 49-inches in size, lithographed in 8 colors on 80-pound stock, with top and bottom rails, and is protected with lamination so it is both markable and washable.