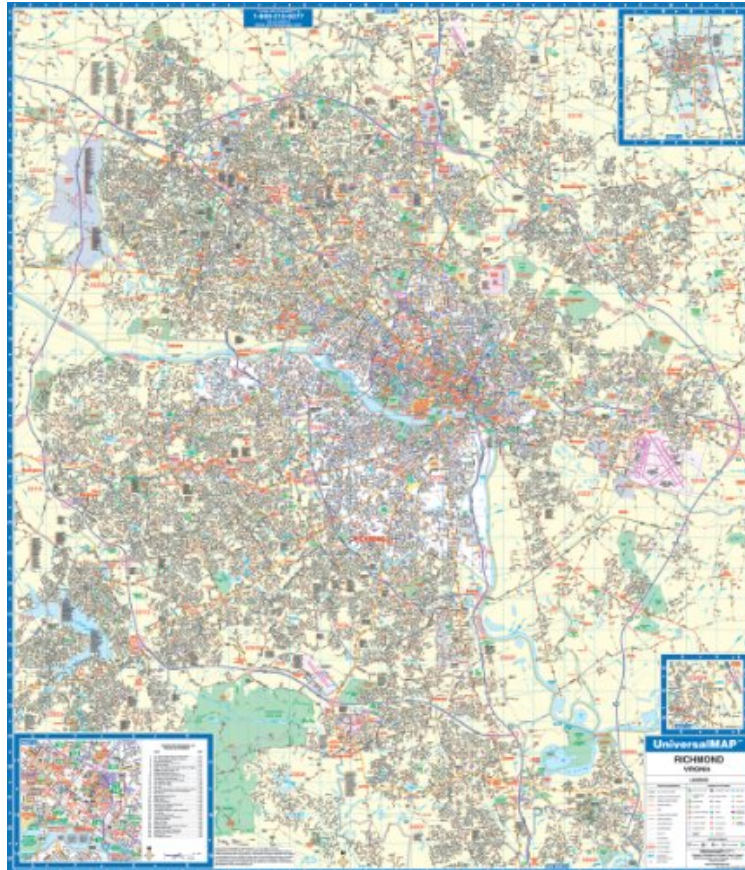


(Free) 2010 Richmond, Va (City Wall Maps)

## 2010 Richmond, Va (City Wall Maps)

*Universal Map*

*audiobook / \*ebooks / Download PDF / ePub / DOC*



 Download

 Read Online

#16361254 in Books 2010-05-18Original language:EnglishPDF # 1Binding: Map | File size: 69.Mb

**Universal Map : 2010 Richmond, Va (City Wall Maps)** before purchasing it in order to gage whether or not it would be worth my time, and all praised 2010 Richmond, Va (City Wall Maps):

Measuring 54 W x 64 H, this 2010, 7th edition Wall Map of Richmond, Virginia by Universal Map provides complete street detail and up-to-date cartography showing new streets and changes at a scale of 1 = 2,640 feet. Printed in color and laminated making the surface both markable and washable. Streets are indexed in a separate book. The area of coverage ranges: North: to the Hanover/Henrico County line including Hanover County Municipal Airport; South: to include Walthall Mill at Exit 58 of the Richmond-Petersburg Turnpike; East: to include the I-295 Loop out to the interchange of I-295 and I-64; West: SR 288; includes West Creek Corporate Center, Brandermill area at Swift Creek Reservoir and Sycamore Creek Golf Course. Insets include the city of Ashland, Walthall area, downtown Richmond with points of interest index. The special features and data are as follows: all streets and highways, government buildings, airports, golf courses and country clubs, railroads, ZIP codes and ZIP code boundaries, shopping centers, water features, recreational parks, cemeteries, educational facilities, hospitals, post offices, city limits and annexations, section/township/range lines, mileage circles, fire and police stations, block numbers, and miscellaneous points of

interest. Framing rails are included on top and bottom for easy wall mounting. Railed wall maps can be turned into pull down maps on spring rollers for an additional \$30.